

# **Connect-Worldwide** Consulting



## **Connect-Worldwide Consulting - developing your global needs at a local level.**

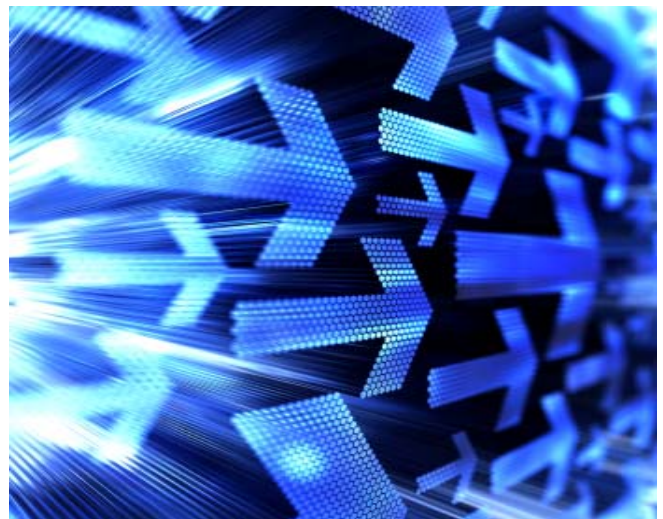
There are many aspects to consider in the international marketplace, whether you have an established presence or want to enter a market for the first time, and we at Connect-Worldwide Consulting can deliver a plan with the best strategy and approach to meet your needs and goals.

We have practical experience in improving or developing international presence for very large and small companies. Our senior executive team has over 20 years experience each in international markets for major hotels, airlines, car rental and tourism companies. In addition the Connect-Worldwide network, with over 30 markets around the world, have very experienced local sales and marketing experts who provide a local and practical approach, delivering revenue results every day.

We are focused on the actual practical delivery of the results and not just providing you with a plan or theory to how it should be done. We want to provide you with the best result-driven approach. We know what will produce the best results for everyone, we know what the challenges can be in each local market or region and we can make sure you avoid those situations.

### **Right Approach—Planning?**

In today's environment there is a need to make sure that your investment made in time and effort, developing your international revenues and position, delivers results. This means making sure that your approach is the right one in the first place and that once in place has a plan to drive it and make it work. We will take that right approach, to ensure that it will work in the short and long term. Also, if you do not want a long term contract commitment, we will work with you on a short term or project based contract, then develop longer term contracts with the right partner that suits your needs and goals.



### **We have offices in the following markets:**

<b>Europe:</b>	Netherlands	<b>North America:</b>	<b>Asia:</b>	<b>Central &amp; South America:</b>	<b>Middle East:</b>
Belgium	Norway	Canada	China	Argentina	Jordan
Denmark	Portugal	Caribbean	Hong Kong	Brazil	Israel
Germany	Spain	Mexico	India	Chile	Venezuela
Greece	France	United States	Japan	Colombia	
Hungary	Sweden		Korea	Costa Rica	<b>Africa:</b>
Italy	Turkey		Singapore	El Salvador	South Africa
Ireland	United Kingdom			Honduras	<b>Oceania:</b>
					Australia
					New Zealand

# **Connect-Worldwide** Consulting



## **Why Connect-Worldwide Consulting?**

We at Connect-Worldwide Consulting understand that flexibility and budget constraints mean that long term budgets are not always available. We therefore can deliver and help you with short term contracts in over 30 markets globally. It is the local, practical delivery that makes the difference and we can deliver that through our established global network of sales and marketing travel industry experts.

**Planning and Market Development** - We can provide you with a detailed plan to improve, develop or create the right product and approach to drive revenue and establish your brand.

**Global and Local Distribution Strategy** – We can ensure that you understand your distribution options, what is practical and what will be best suited to you in the short and long term. We will develop the best approach to each market, depending upon your needs and budget.

**Local Market Sales Missions** – We can create and deliver a local sales mission for you in the markets that are potential revenue generators for you. We will manage the delivery by local experts, but also make sure that your expectations are realistic.

**Local Market Research** – If you need to gather some practical local market knowledge, data or competitive information, we can quickly do that for you.



## **Who Can We Deliver For?**

Hotels • Airlines • Cruise Lines • Car Rental •  
Tourism Boards • Destination Marketing

## **What Segments & Areas Can We Deliver In?**

Sales • Marketing • PR • Distribution •  
Product Development • Product Launch •  
Risk Management • Web Strategy • E-Commerce •  
Digital Media • Financial processing •  
Business Processing Outsourcing •  
Vendor Negotiating

**9237 E. Via De Ventura, Suite 130, Scottsdale,  
Arizona 85258, USA**

**Tel:+1 480-951-8877 Fax:+1 480-951-8909**

**[www.connect-worldwide.com](http://www.connect-worldwide.com)**

**[CWW\\_Consulting@connect-worldwide.com](mailto:CWW_Consulting@connect-worldwide.com)**